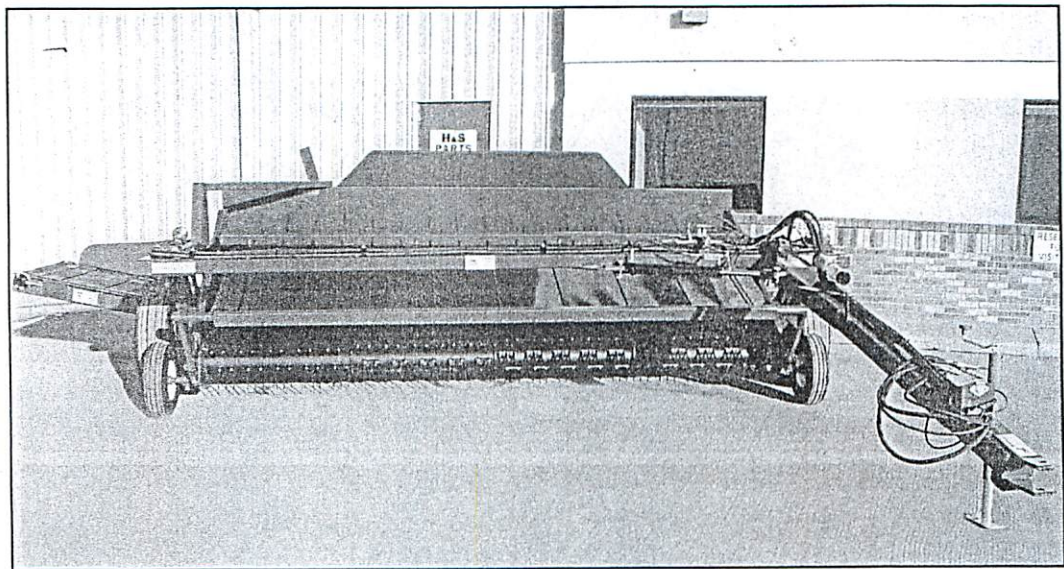


HSm9 / HSm12

# H&S

## HYDRA-SWING

### WINDROW MERGER



#### **WARNING**

READ AND UNDERSTAND THIS MANUAL  
BEFORE OPERATING THIS EQUIPMENT.

UNSAFE OPERATION OR MAINTENANCE OF THIS EQUIPMENT CAN RESULT IN SERIOUS  
INJURY OR DEATH.

## **PARTS & OPERATOR'S INSTRUCTIONS**

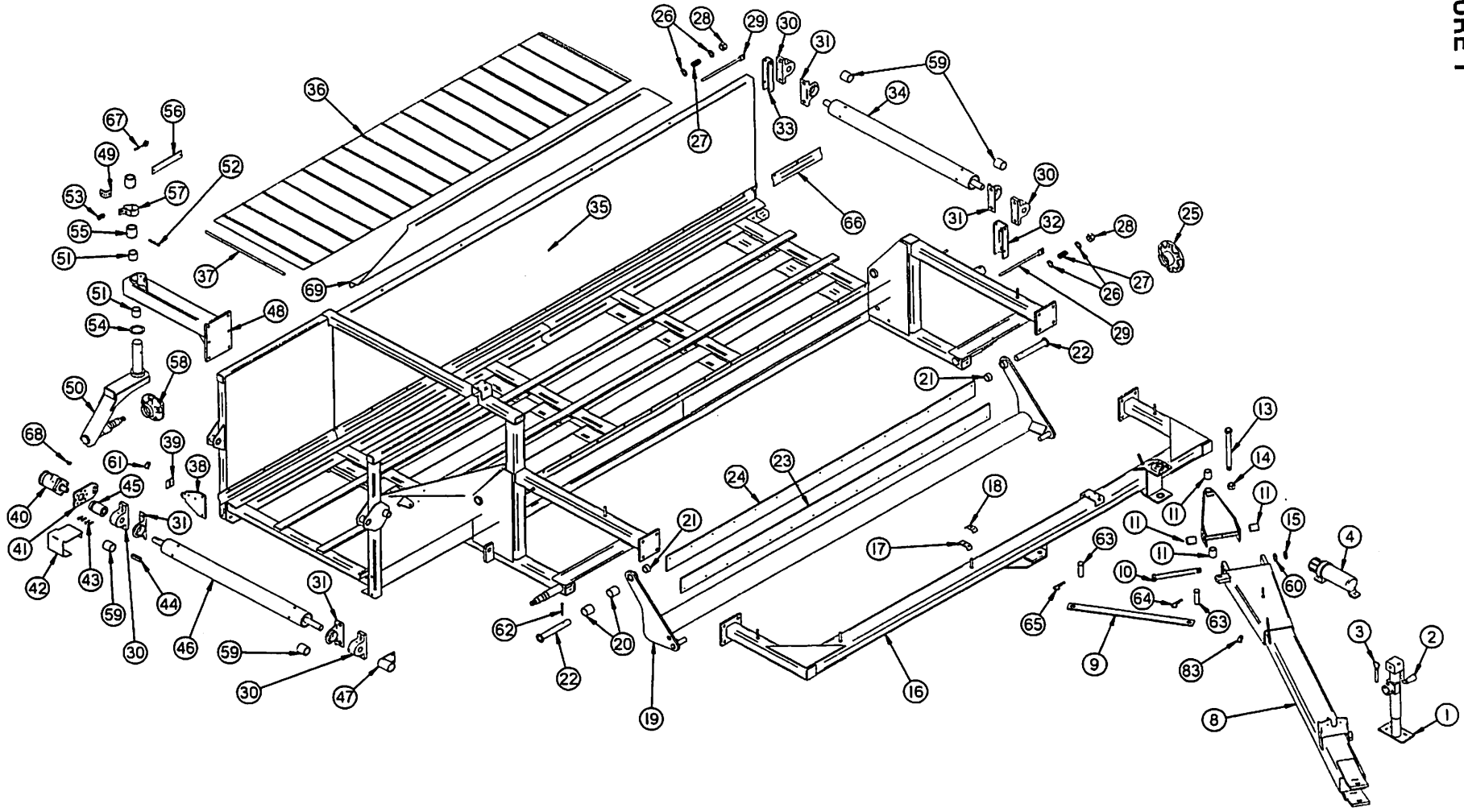
1-30-2009

Manufactured By  
**H&S MANUFACTURING CO., INC.**

P.O. BOX 768 • (715) 387-3414 FAX (715) 384-5463

MARSHFIELD, WISCONSIN 54449

FIGURE 1



Dev

**FIGURE 1  
9' & 12' MERGER MAIN FRAME/POLE**

ITEM	PART NO.	DESCRIPTION
37.	SWM37	Lacing Pin
38.	DWM51	Male Torque Arm
39.	DWM45	Motor Spacer
40.	DF1	Hydraulic Motor
3.	BFR4	Jack Pin & Chain
4.	S522	Manual Holder
8.	WM227	Pole
9.	WM129	Transport Lock
10.	WM202	Pole Pin
11.	RG11	Bushing 1"ID x 1-1/4"OD x 2"
12.	WM228	Steering Pivot
13.	WM231	Queen Pin
14.	RG17	Nut-Slotted 1"-14 Full Thread
15.	RG14	Jam Nut 1"-14 Full Thread
16.	WM226	Tongue Cross
17.	HE42	Hose Bracket
18.	23N67	Hose Bracket Front
19.	WM230	Pickup Lifter
20.	RG132	Bushing 1-1/4"ID x 2"
21.	SWM30	Spacer
22.	SWM13	Pin
23.	WM235	Skirt Belt
24.	WM236	Skirt
25.	RG101	Hub - 6 bolt
26.	RG98	Seal
27.	RG99	Inner Bearing
28.	RG100	Inner Race
29.	BFR144	Stud Nut
30.	RG47	Outer Race
31.	RG48	Outer Bearing
32.	BFR62	Outer Race
33.	BFR63	Washer
34.	BFR64	Nut
35.	BFR66	Hub Nut
36.	RG103	Hub Cap
37.	BFR128	5/32" x 2" Cotter Pin
38.	BFR67	Tire 9.5 L x 15
39.	12N24	Wheel 15 x 8
40.	RG125	Washer 1/2"
41.	DWM125	Spring - Blue
42.	R29	Nut 1/2"
43.	DWM25	Tightener
44.	DWM132	Pillow Block Bearing
45.	DWM36	Anti-Wrap Guard
46.	SWM34	Tightener Arm
47.	SWM33	Back Tightener Arm
48.	SWM10	Conveyor Roller
49.	WM229	Main Frame
50.	WM237	Cross Conveyor Belt
51.	WM301	Cross Conveyor Belt
52.	WM308	Main Frame
53.	WM229	Main Frame
54.	SWM10	Conveyor Roller
55.	SWM33	Back Tightener Arm
56.	SWM34	Tightener Arm
57.	DWM36	Anti-Wrap Guard
58.	BFR7	Hair Pin
59.	SWM59	Left Rear Guard Extension
60.	WM287	I-Bolt
61.	5B10	Key 1/4" x 1" Woodruff
62.	WM300	Hay Deflector
63.	WM270	Clevis Pin
64.	R70	Cotter Pin
65.	BFR7	Hair Pin
66.	SWM59	Left Rear Guard Extension
67.	WM287	I-Bolt
68.	5B10	Key 1/4" x 1" Woodruff
69.	WM300	Hay Deflector
70.	WM269	Bolt 1/4" x 3" GR.5
71.	F56	Lynch Pin
72.	RG13	1" Star Washer
73.	SWM30	Spacer
74.	BFR67	Wheel 15 x 5
75.	BFR128	Tire 6.70 x 15 SL
76.	BFR65	Cotter Pin
77.	BFR66	Hub Cap
78.	BFR66	Hub Nut
79.	BFR64	Nut
80.	BFR63	Washer
81.	BFR62	Outer Bearing
82.	BFR61	Outer Race
83.	BFR144	Stud Nut
84.	BFR143	Stud Bolt
85.	BFR59	Inner Race
86.	BFR58	Inner Bearing
87.	BFR57	Seal
88.	BFR60	Hub
89.	WM286	Brake Band
90.	WM288	Brake Pad
91.	DWM59	Brake Bushing
92.	RG24	Bronze Washer 2"ID x 3"OD x 1/8"
93.	WM210	Spring - Red
94.	BFR313	Roll Pin 5/16" x 2-3/4"
95.	BFR527	Bushing 2"ID x 2-1/4"OD x 2"
96.	SWM2	Caster
97.	WM211	Break Angle
98.	SWM3	Caster Mount
99.	DWM31	Shaft Shield
100.	SWM11	Drive Roller
101.	DWM27	Coupler
102.	G23	Key 5/16" x 1-3/8" Sq.
103.	DWM137	Cap Screw - Coupler
104.	DWM41	Motor Shield
105.	DWM39	Torque Arm
106.	WM225	Seal Kit
107.	DF1	Hydraulic Motor
108.	DWM45	Motor Spacer
109.	DWM51	Male Torque Arm
110.	SWM37	Lacing Pin

NOTE: \* Means Not Shown  
" Means Same As Previous

9' HEAD 12' HEAD

SWM38 " Cross Conveyor Lacing

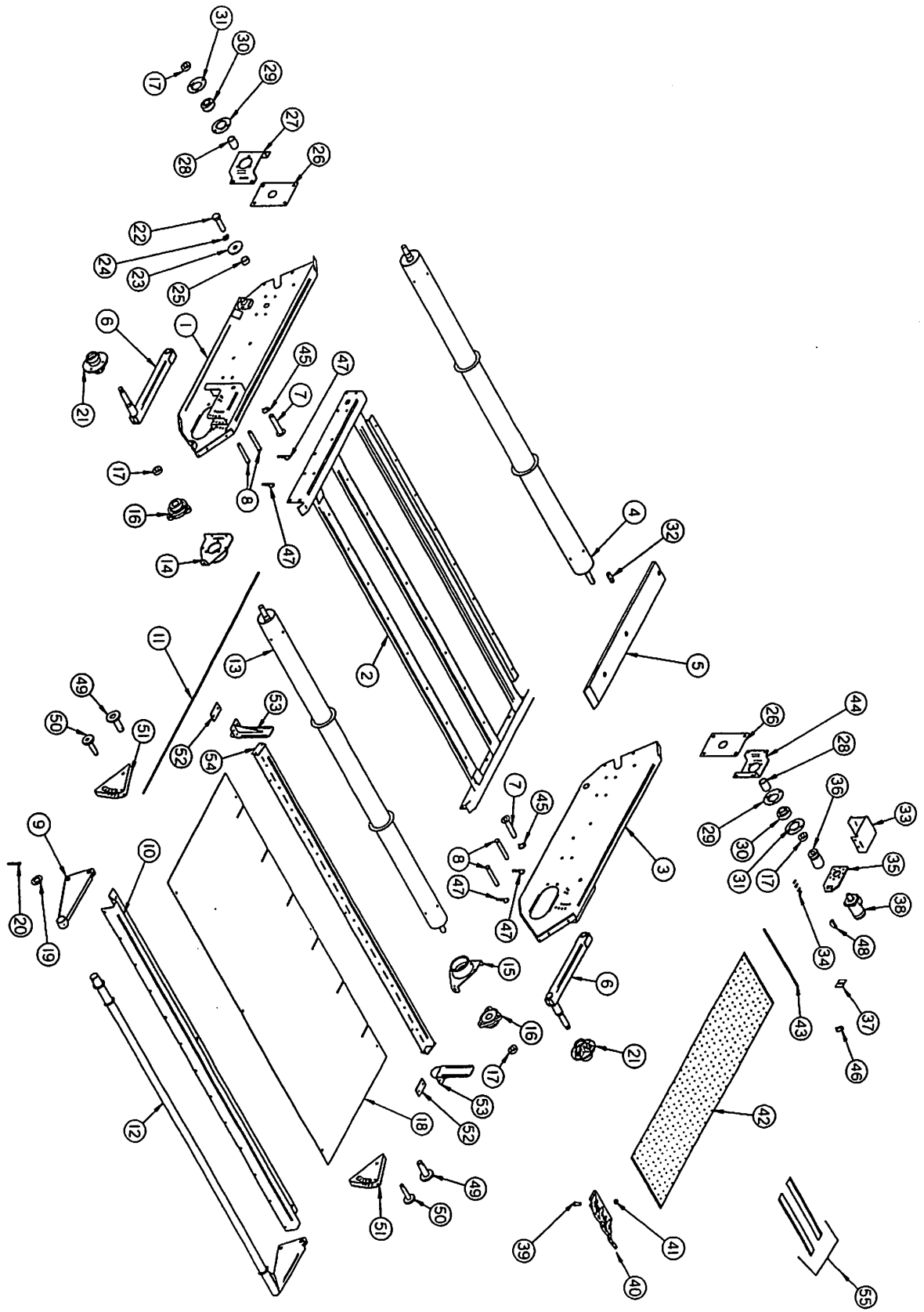


FIGURE 2

**FIGURE 2  
9' MERGER PICK-UP HEAD**

ITEM	PART NO.	DESCRIPTION	ITEM	PART NO.	DESCRIPTION
1.	DWM6	Right Head Panel	25.	WM183	Pivot Bushing
2.	WM234	Flat Belt Frame	26.	WM180	Side Panel Slot Plate
3.	DWM5	Left Head Panel	27.	WM187	Bearing Bracket RH
4.	WM232	Head Drive Roller	28.	WM343	Spacer
5.	SWM15	Slides (8)	29.	F145	Flange
6.	DWM8	Gauge Arms	30.	WM29	Bearing
7.	DWM7	Pivot Pin	31.	F143	Flange (Greaseable)
8.	DWM127	Clevis Pin	32.	G23	Key 5/16" x 1-3/8"
9.	DWM332	Right Wind Guard	33.	DWM40	Head Shield
10.	- DWM2	Wind Guard Holder	34.	DWM137	Cap Screw-Coupler
11.	- WM299	Wind Guard Rods (13)	35.	DWM39	Hydraulic Motor Mount
12.	DWM333	Wind Guard	36.	DWM27	Coupler
13.	WM233	Front Idler Roller	37.	DWM45	Motor Spacer
14.	WM179	Right Front Roller Bracket	38.	DWM84	Hydraulic Motor
15.	WM192	Left Front Roller Bracket	*	WM225	Seal Kit
16.	SWM35	3-Bolt Bearing Assembly	39.	SWM26	1/4" x 3/4" Elevator Bolts (780)
17.	WM27	Lock Collar	40.	SWM1	Pickup Teeth (390)
18.	WM297	Poly Wind Guard	41.	SWM27	1/4 Keps Lock Nuts (780)
19.	DWM227	Wind Guard Washer	42.	SWM56	Pickup Belts - Only
20.	SWM55	Cotter Pin 1/4" x 2-1/2"	*	SWM57	Complete Belt W/ Teeth
21.	CAT177	Hub - Complete	43.	SWM41	Lacing Pin
*	CAT135A	Seal	44.	WM186	Bearing Bracket LH
*	CAT10	Bearing (2)	45.	R70	3/16" x 2" Cotter Pin
*	CAT9	Race (2)	46.	F56	Lynch Pin
*	CAT128	Stud	47.	ES7	Hair Pin
*	BFR144	Lug Nut	48.	5B10	Key 1/4" x 1" Woodruff
*	CAT12	Spindle Nut	49.	DWM347	Wind Guard Pivot Pin
*	BFR65	Cotter Pin	50.	DWM348	Wind Guard Adj. Pins
*	CAT13	Hub Cap	51.	DWM374	Wind Guard Bracket
*	SWM17	Wheel (2)	52.	DWM368	Wind Guard Poly
*	SWM18	Tire 5.70-8 (2)	53.	DWM385	Poly Brackets
22.	DWM177	Bolt 1" x 2-1/2" GR.5 Full Thread	54.	DWM355	Poly Support
23.	WM218	Washer	55.	SWM61	Repair Dutchman Kit
24.	DWM171	1" Lock Washer	<b>NOTE: *Means Not Shown</b>		

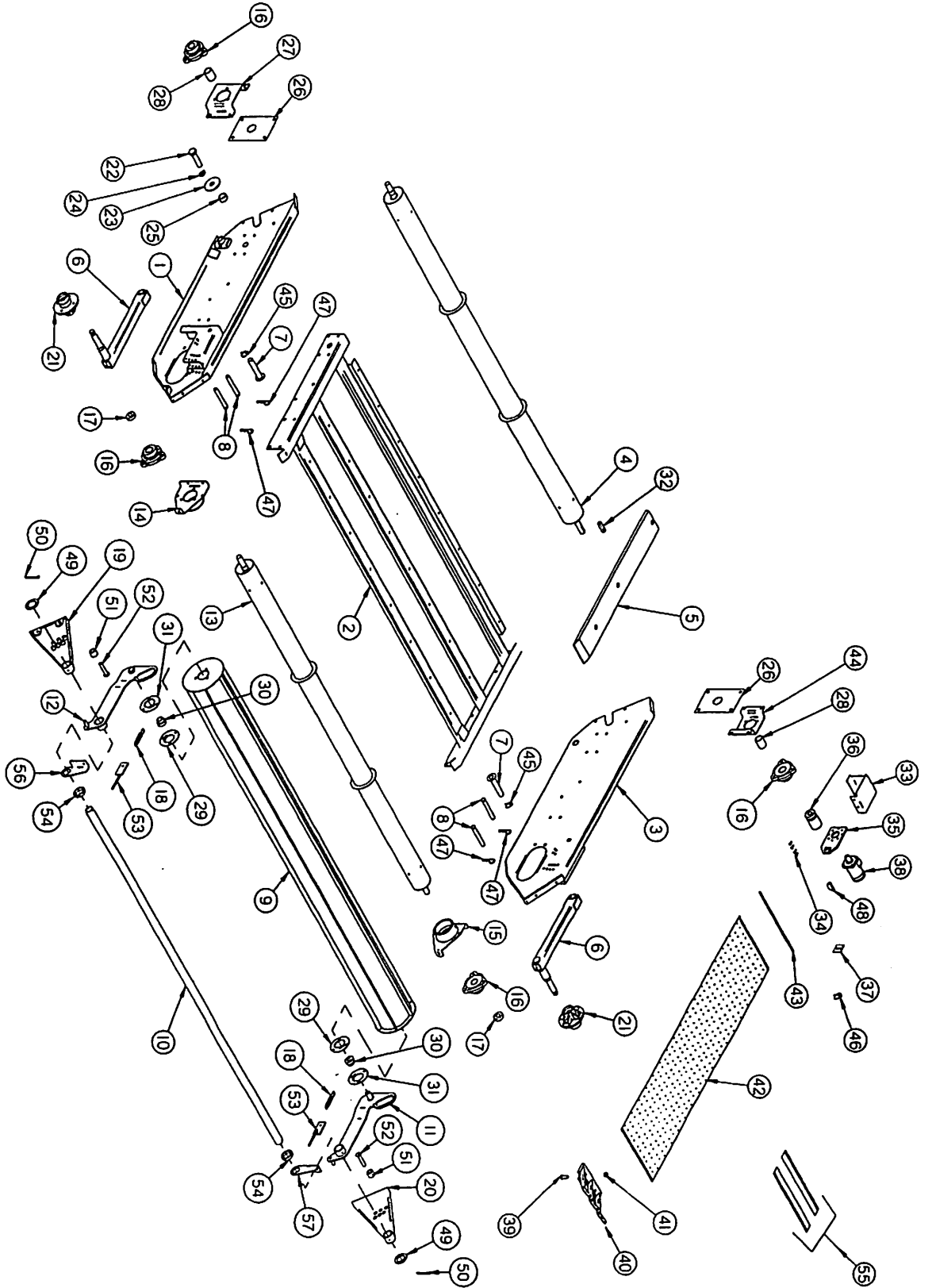


FIGURE 3

**FIGURE 3**  
**12' MERGER PICK-UP HEAD**

ITEM	PART NO.	DESCRIPTION	ITEM	PART NO.	DESCRIPTION
1.	DWM6	Right Head Panel	25.	WM183	Pivot Bushing
2.	WM307	Flat Belt Frame	26.	WM180	Side Panel Slot Plate
3.	DWM5	Left Head Panel	27.	SHM13	Bearing Bracket RH
4.	SHM5	Head Drive Roller	28.	WM343	Spacer
5.	SWM15	Slides (8)	29.	F14	Flange
6.	DWM8	Gauge Arms	30.	F115	1-1/4" Bearing
7.	DWM7	Pivot Pin	31.	F114A	Flange (45° Zerk)
8.	DWM127	Clevis Pin	32.	G23	Key 5/16" x 1-3/8"
9.	WM352	12' Crop Roller	33.	DWM40	Head Shield
10.	WM346	Front Support	34.	DWM137	Cap Screw-Coupler
11.	WM348	Left Arm	35.	DWM39	Hydraulic Motor Mount
12.	WM349	Right Arm	36.	DWM27	Coupler
13.	SHM6	Front Idler Roller	37.	DWM45	Motor Spacer
14.	WM179	Right Front Roller Bracket	38.	DWM84	Hydraulic Motor
15.	WM192	Left Front Roller Bracket	*	WM225	Seal Kit
16.	SWM35	3-Bolt Bearing Assembly	39.	SWM26	1/4" x 3/4" Elevator Bolts (780)
17.	WM27	Lock Collar	40.	SWM1	Pickup Teeth (390)
18.	ST36	Spring	41.	SWM27	1/4 Keps Lock Nuts (780)
19.	WM350	Right Bracket	42.	SWM56	Pickup Belts - Only
20.	WM351	Left Bracket	*	SWM57	Complete Belt W/ Teeth
21.	CAT177	Hub - Complete	43.	SWM41	Lacing Pin
*	CAT135A	Seal	44.	SHM12	Bearing Bracket LH
*	CAT10	Bearing (2)	45.	R70	3/16" x 2" Cotter Pin
*	CAT9	Race (2)	46.	F56	Lynch Pin
*	CAT128	Stud	47.	ES7	Hair Pin
*	BFR144	Lug Nut	48.	5B10	Key 1/4" x 1" Woodruff
*	CAT12	Spindle Nut	49.	DWM227	Wind Guard Washer
*	BFR65	Cotter Pin	50.	SWM55	Cotter Pin 1/4" x 2-1/2"
*	CAT13	Hub Cap	51.	WM353	Poly Bumper
*	SWM17	Wheel (2)	52.	WM354	Adjustment Pin
*	SWM18	Tire 5.70-8 (2)	53.	12V78	Tightener Bracket
22.	DWM177	Bolt 1" x 2-1/2" GR.5 Full Thread	54.	WM347	Collar
23.	WM218	Washer	55.	SWM61	Repair Dutchman Kit
24.	DWM171	1" Lock Washer	56.	WM362	Spring Tightener Bracket Right
			57.	WM363	Spring Tightener Bracket Left

NOTE: \*Means Not Shown

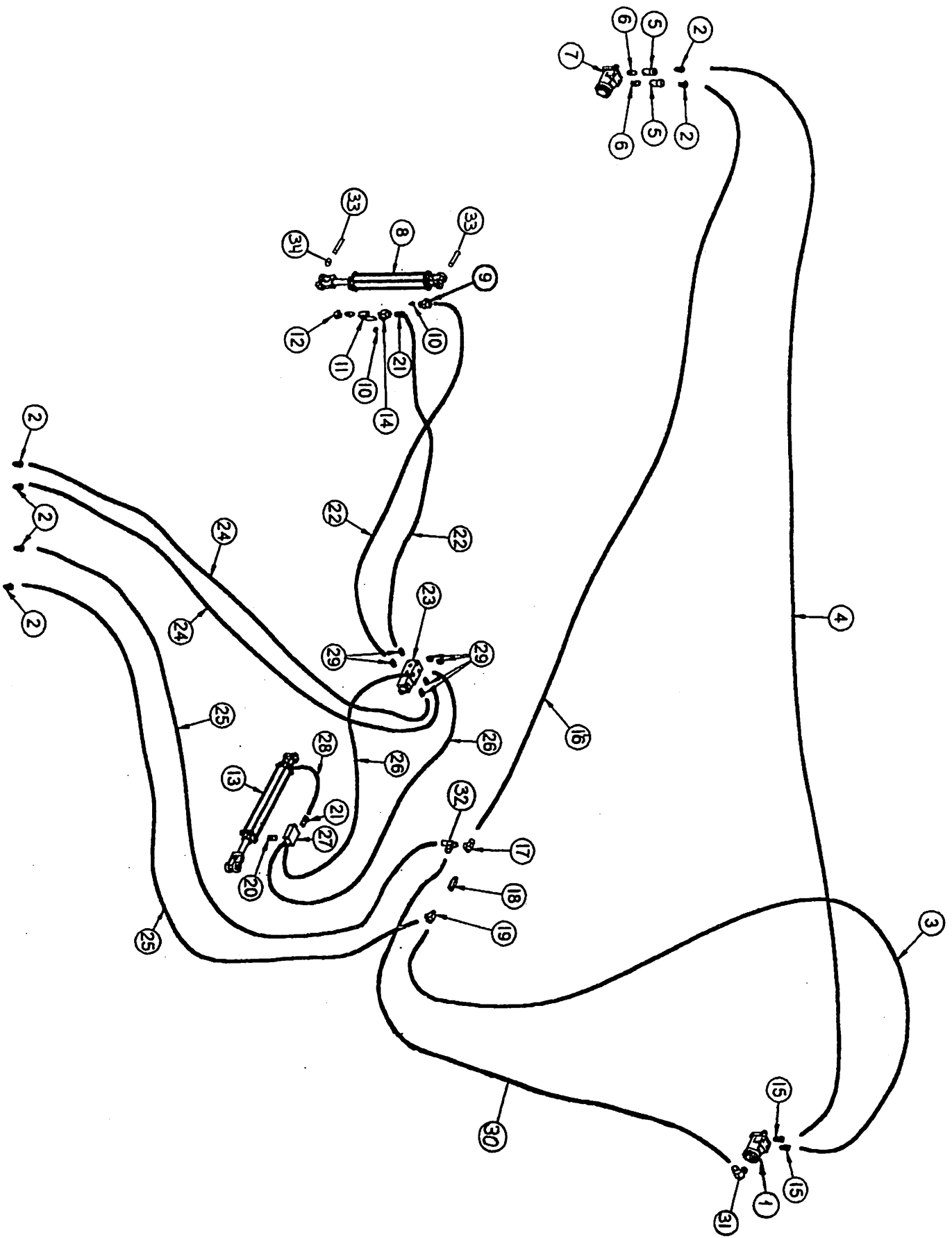


FIGURE 4

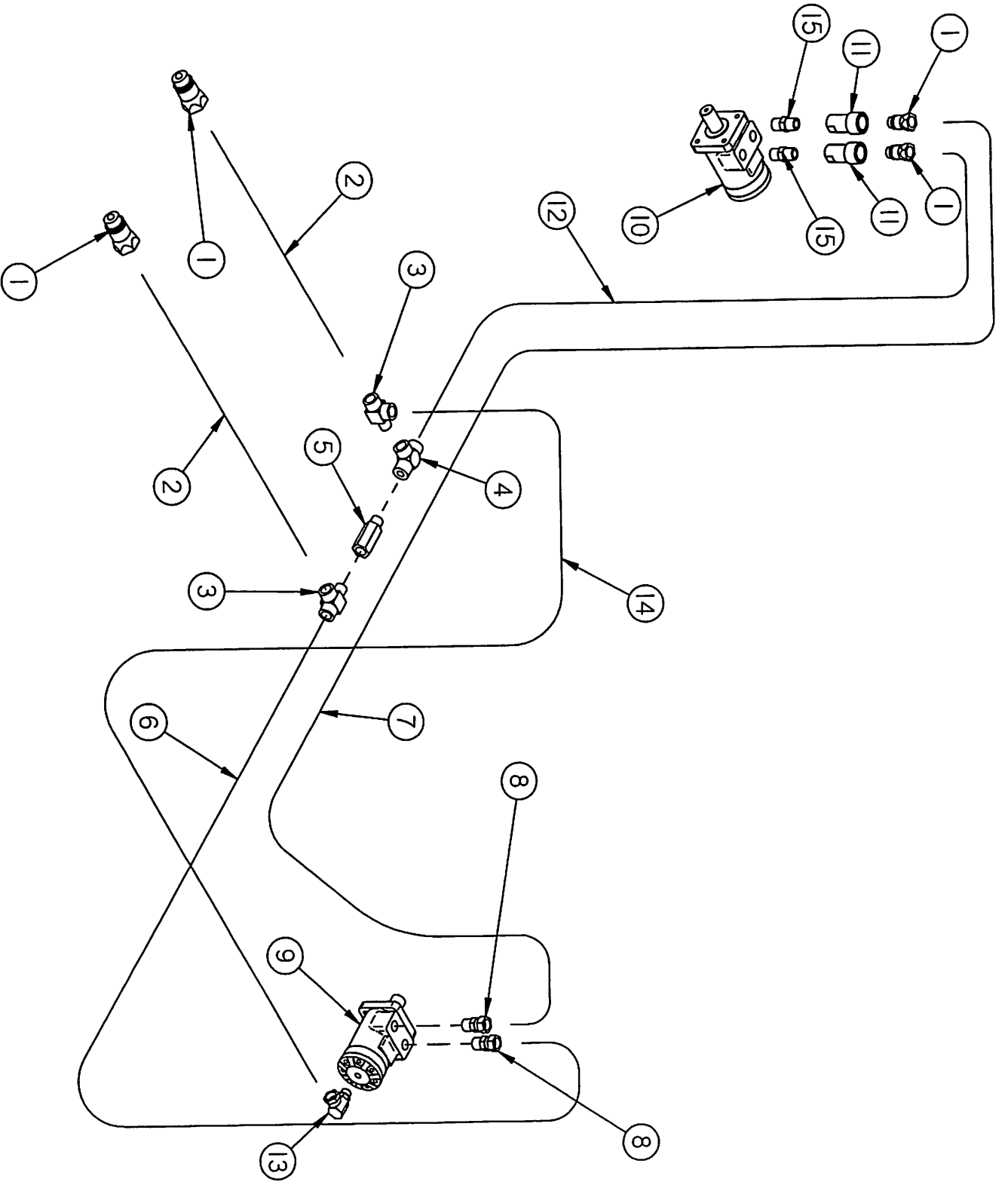


**FIGURE 4  
9' MERGER HYDRAULICS**

<b>ITEM</b>	<b>PART NO.</b>	<b>DESCRIPTION</b>
1.	DWM84	Hydraulic Motor
*	WM225	Seal Kit
2.	DWM205	Male Coupler
3.	WM255	Hose 1/2" x 84"
4.	WM310	Hose 1/2" x 358"
5.	DWM206	Female Coupler
6.	WM141	1/2" Nipple Nut
7.	DF1	Hydraulic Motor
*	WM225	Seal Kit
8.	BFR69A	2" x 8" Cylinder
9.	WM146	1/2" Male/Female Tee
10.	WM147	Pipe Plug 3/8"
11.	16SV338	3/8" Ball Valve
12.	23N234	3/8" Street Elbow
13.	12V116A	2" x 16" Cylinder
14.	23N116	3/8" Service Tee
15.	LW174	1/2" Union Adapter
16.	WM311	Hose 1/2" x 266"
17.	DF8	1/2" Tee
18.	DF18	1/2" Check Valve
19.	16SV352	1/2" Service Tee
20.	BFR188	3/8" Nipple Nut
21.	T244	Adapter Union W/.042" Orifice
*	BFR122	Adapter Union
*	DWM250	Orifice .042
22.	WM257	Hose 1/4" x 140"
23.	FR81	Valve
*	WM325	Solenoid
24.	WM258	Hose 1/4" x 164"
25.	WM259	Hose 1/2" x 164"
26.	WM260	Hose 1/4" x 24"
27.	WM176	Pole Lock Valve
28.	BFR315	Hose 1/4" x 20"
29.	WM148	Female Adapters
30.	WM271	Hose 1/4" x 102"
31.	DWM119	O-Ring Adapter
32.	LW96	Tee
33.	BFR517	Cylinder Pin
34.	K132	Cylinder Spacer

**NOTE:** \* Means Not Shown

FIGURE 5



**FIGURE 5**  
**12' HEAD MERGER MOTOR CIRCUIT**

<b>ITEM</b>	<b>PART NO.</b>	<b>DESCRIPTION</b>
1.	DWM205	Male Coupler
2.	WM259	Hose 1/2" x 164"
3.	16SV352	1/2" Service Tee
4.	DF8	1/2" Tee
5.	DF18	1/2" Check Valve
6.	WM255	Hose 1/2" x 84"
7.	WM312	Hose 1/2" x 394"
8.	LW174	1/2" Union Adapter
9.	DWM84	Hydraulic Motor
*	WM225	Seal Kit
10.	DF1	Hydraulic Motor
11.	DWM206	Female Coupler
12.	WM313	Hose 1/2" x 302"
13.	DWM119	O-Ring Adapter
14.	WM271	Hose 1/4" x 102"
15.	WM141	1/2" Nipple Nut

**NOTE:** \* Means Not Shown

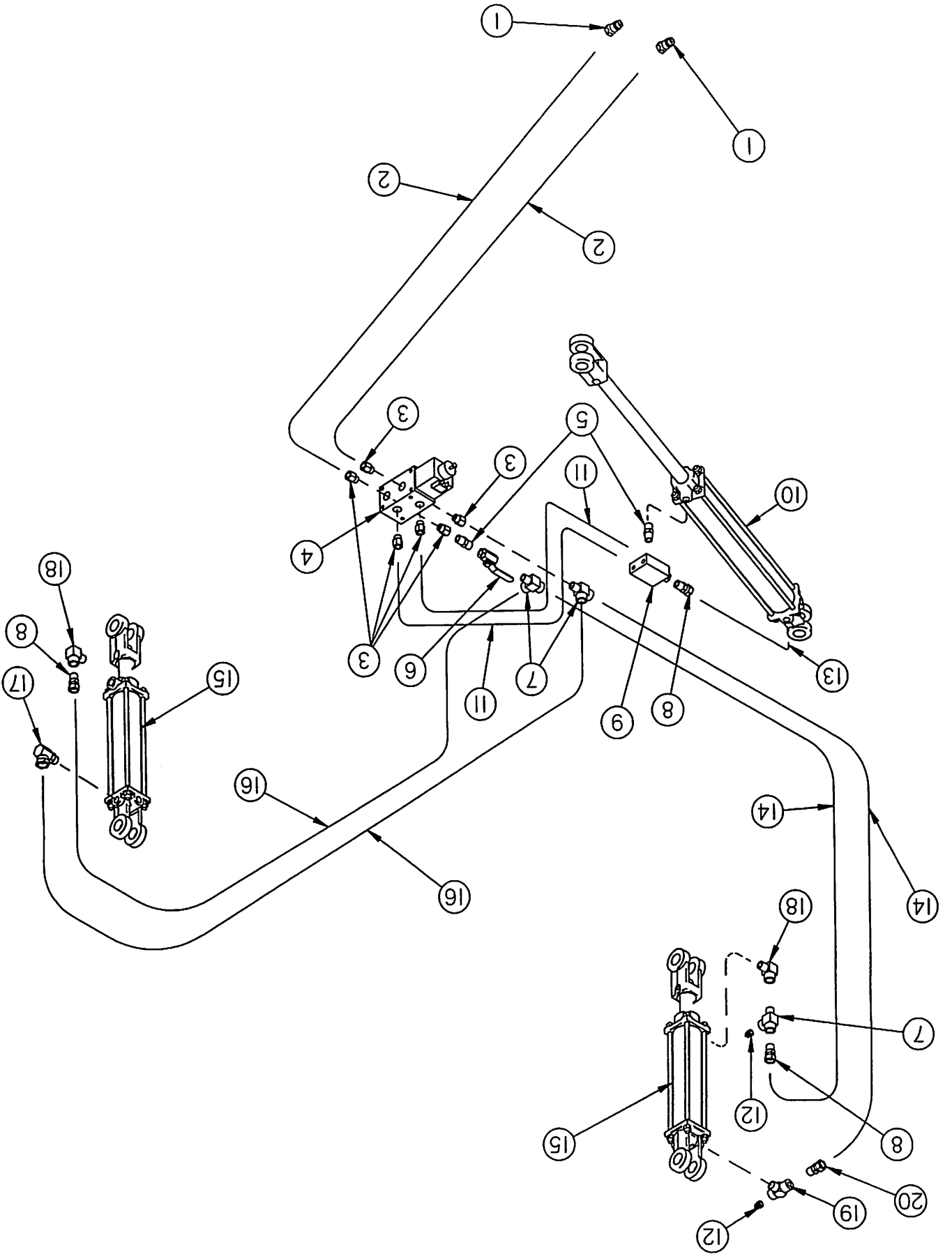


FIGURE 6

**FIGURE 6**  
**12' MERGER - HEAD LIFT HYDRAULICS**

<b>ITEM</b>	<b>PART NO.</b>	<b>DESCRIPTION</b>
1.	DWM205	Male Coupler
2.	WM258	Hose 1/4" x 164"
3.	WM148	Female Adapters
4.	16SV247	Waterman Valve
*	WM325	Solenoid
5.	BFR188	3/8" Nipple Nut
6.	16SV338	3/8" Ball Valve
7.	23N116	3/8" Service Tee
8.	T244	Adapter Union W/ .042" Orifice
*	BFR122	Adapter Union (Threaded)
*	DWM250	Orifice .042
9.	WM176	Pole Lock Valve
10.	12V116A	2" x 16" Cylinder
11.	WM260	Hose 1/4" x 24"
12.	WM147	Pipe Plug 3/8"
13.	BFR315	Hose 1/4" x 20"
14.	WM315	1/4 x 175" - 3/8 MP & 3/8 MP
15.	BFR69A	2" x 8" Cylinder
16.	WM314	1/4 x 108" - 3/8 MP & 3/8 MP
17.	DWM110	3/8" Street Elbow W/90 Degree Swivel
18.	23N234	3/8" Street Elbow
19.	WM146	3/8" Male/Female Tee
20.	DWM233	3/8" Adapter Union (Un-Threaded)

**NOTE: \* Means Not Shown**

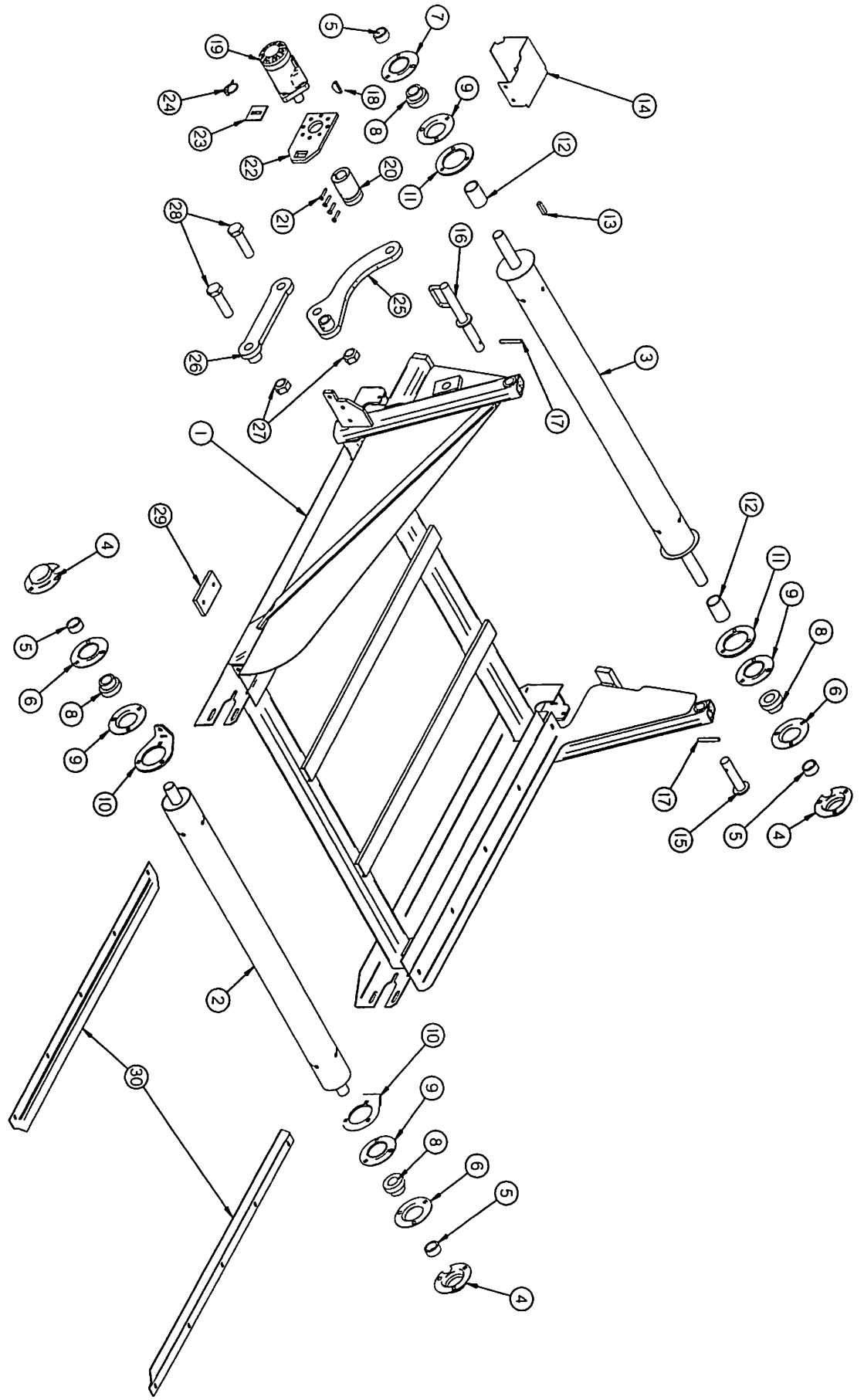


FIGURE 7

**FIGURE 7**  
**9' & 12' MERGER - EXTENSIONS**

ITEM	PART NO.			DESCRIPTION
	2' EXT.	4' EXT.	6' EXT.	
1.	WM316	WM320	WM321	Frame
2.	WM244	"	"	Tightener Roller
3.	WM243	"	"	Drive Roller
4.	F95	"	"	Bearing Shield
5.	F16	"	"	Lock Collar
6.	F114	"	"	Flange W/Straight Zerk
7.	F114A	"	"	Flange W/45 Degree Zerk
8.	F115	"	"	Bearing
9.	F14	"	"	Flange
10.	WM250	"	"	Flange Tightener
11.	23N174	"	"	Flange Spacer
12.	WM136	"	"	Ext. PVC Shield
13.	WM121	"	"	Sq. Key 5/16" x 1"
14.	WM319	"	"	Motor Shield
15.	WM245	"	"	Extension Pivot Pin
16.	WM248	"	"	Extension Pivot Pin Front
17.	3G22	"	"	Expansion Pin 5/16" x 1-3/4"
18.	5B10	"	"	Woodruff Key 1/4" x 1"
19.	DF1	"	"	Hydraulic Motor
*	WM225	"	"	Seal Kit
20.	DWM27	"	"	Coupler
21.	DWM137	"	"	Socket Head Cap Screw
22.	DWM39	"	"	Torque Arm
23.	DWM45	"	"	Motor Spacer
24.	F56	"	"	Lynch Pin
25.	WM317	"	"	Long Link
26.	WM318	"	"	Short Link
27.	BFR178	"	"	1" Lock Nut
28.	BFR545	"	"	Bolt 1" x 3-1/2" GR.5
29.	-----	WM251	"	Rubber Bumper
↑ 30.	WM272	WM273	WM274	Belt Guard
*	WM252	WM253	WM254	Belt
*	SWM37	"	"	Lacing Pin
*	SWM38	"	"	Lacing-Cross Conveyor

NOTE: \* Means Not Shown

----- Means Not Used On This Model

" Means Same As Previous

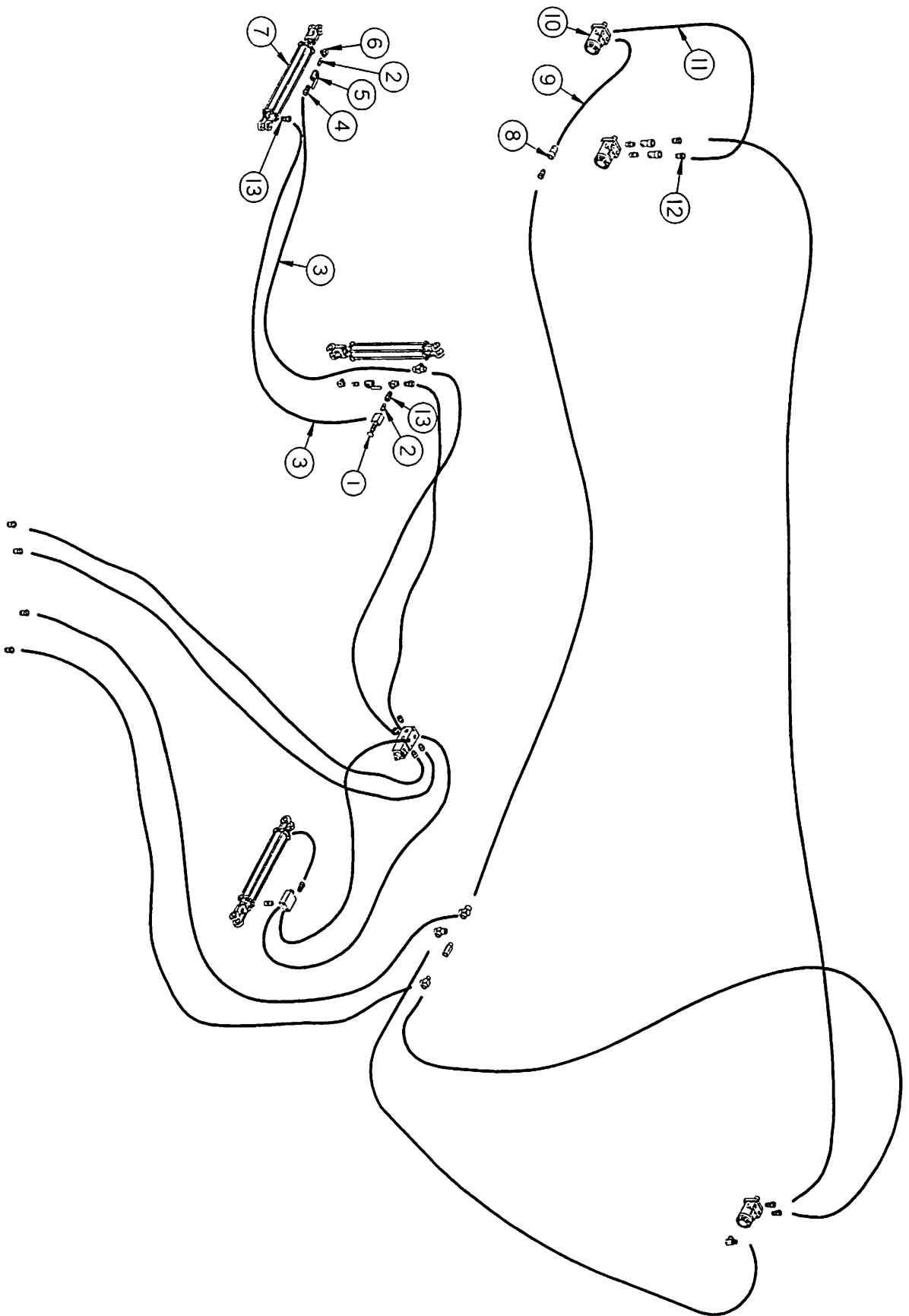


FIGURE 8



**FIGURE 8**  
**9' & 12' MERGER**  
**2-4-6 FOOT EXTENSION HYDRAULICS**

<b>ITEM</b>	<b>PART NO.</b>	<b>DESCRIPTION</b>
1.	16SV339	Sequence Valve
2.	BFR188	3/8" Nipple Nut
3.	WM257	Hose 1/4" x 140"
4.	T244	3/8" Union Adapter W/.042" Orifice
5.	16SV338	3/8" Ball Valve
6.	23N234	3/8" Street Tee
7.	23N111A	Extension Cylinder
8.	DWM206	Female Coupler
9.	WM263	Hose 1/2" x 24"
10.	DF1	Hydraulic Motor
*	WM225	Seal Kit
11.	WM264	Hose 1/2" x 40"
12.	DWM205	Male Coupler
13.	DWM233	3/8" Adapter Union

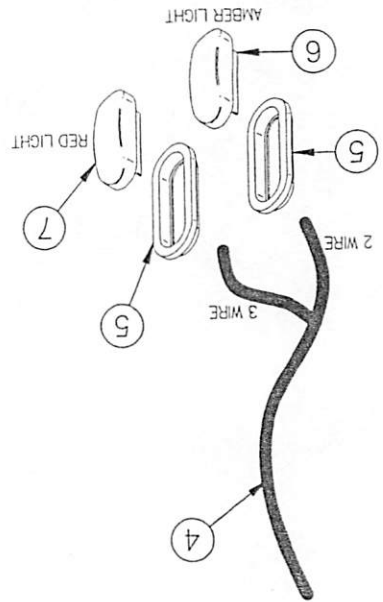
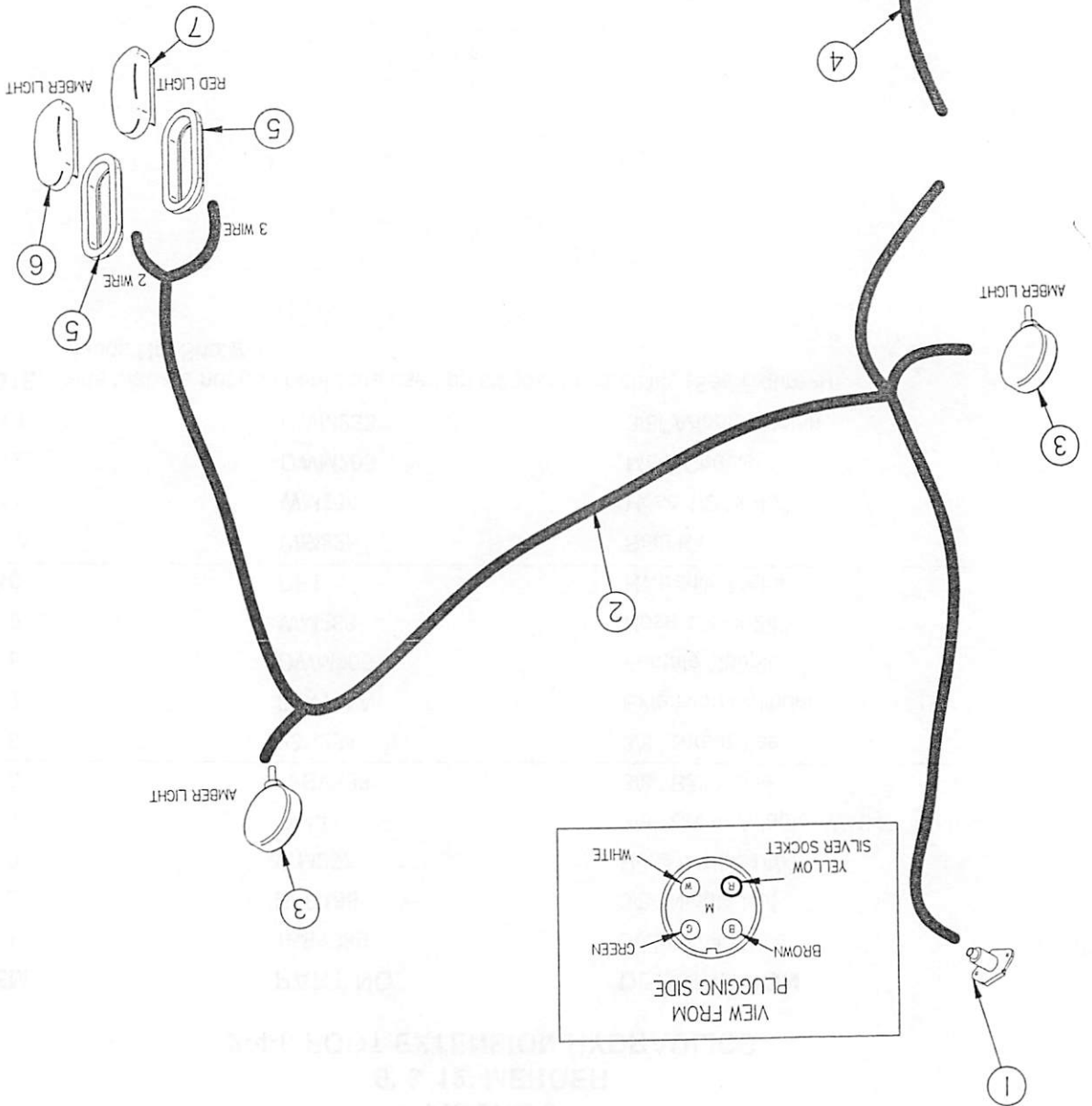
**NOTE:** Parts that are not numbered are used on standard hydraulics (See Figure 4)

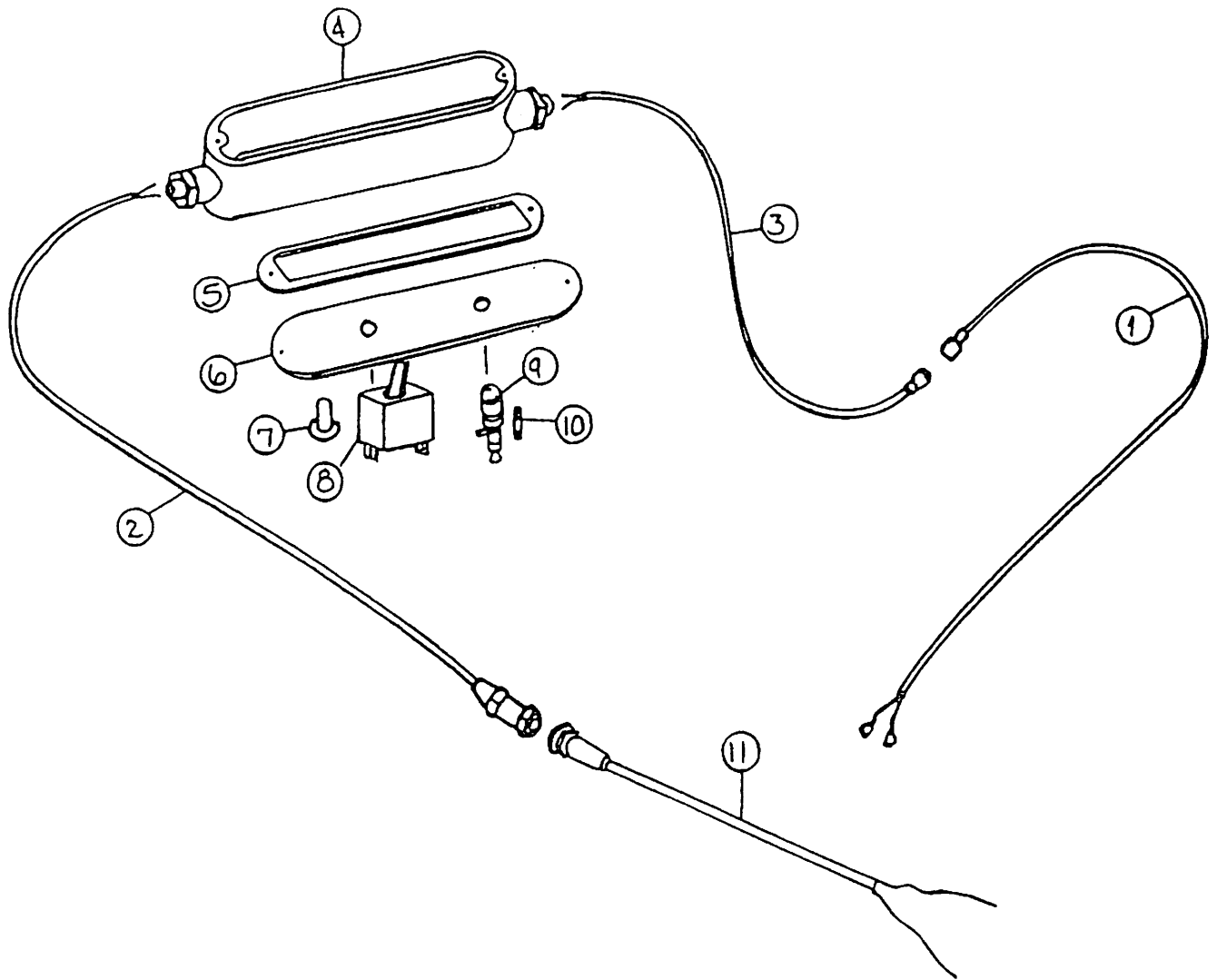
\* Means Not Shown

NOTE: \* Means Not Shown  
 " Means Same As Previous

ITEM	PART NO.	DESCRIPTION
1.	SWM46	Plug In
2.	WM364	Light Harness (Right)
3.	DWM129	Amber Light (Yellow Hazard)
4.	WM366	Light Harness (Left)
5.	S308	Rubber Light Mount
6.	DWM131	Amber Light
7.	S310	Red Light
*	WM330	Complete Light Harness

FIGURE 9  
 9' & 12' MERGER WIRING

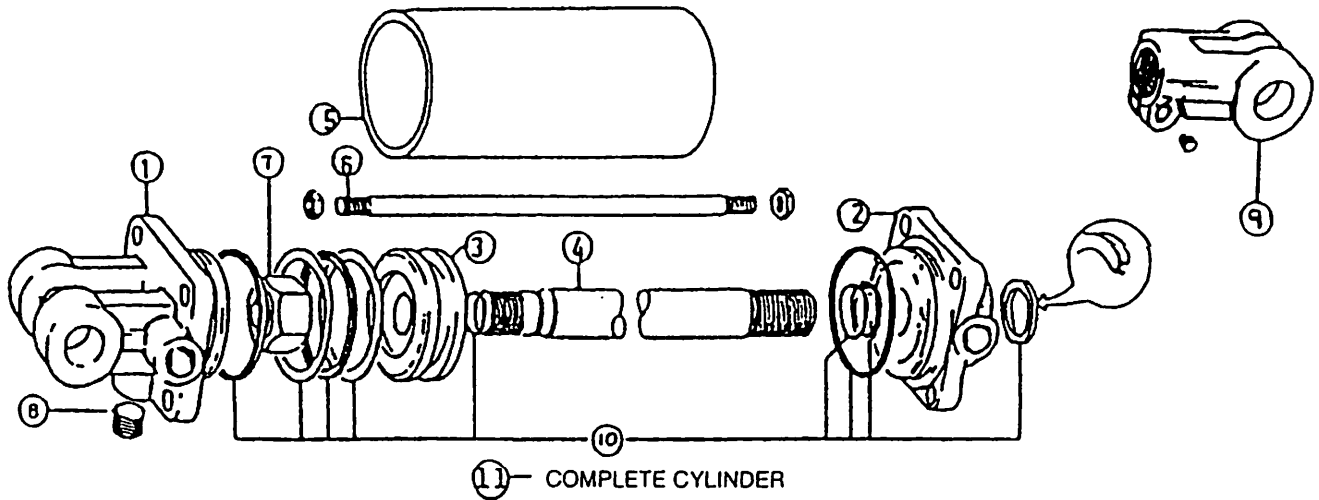




**FIGURE 10**  
**9' & 12' MERGER**  
**ELECTRIC CONTROL BOX**

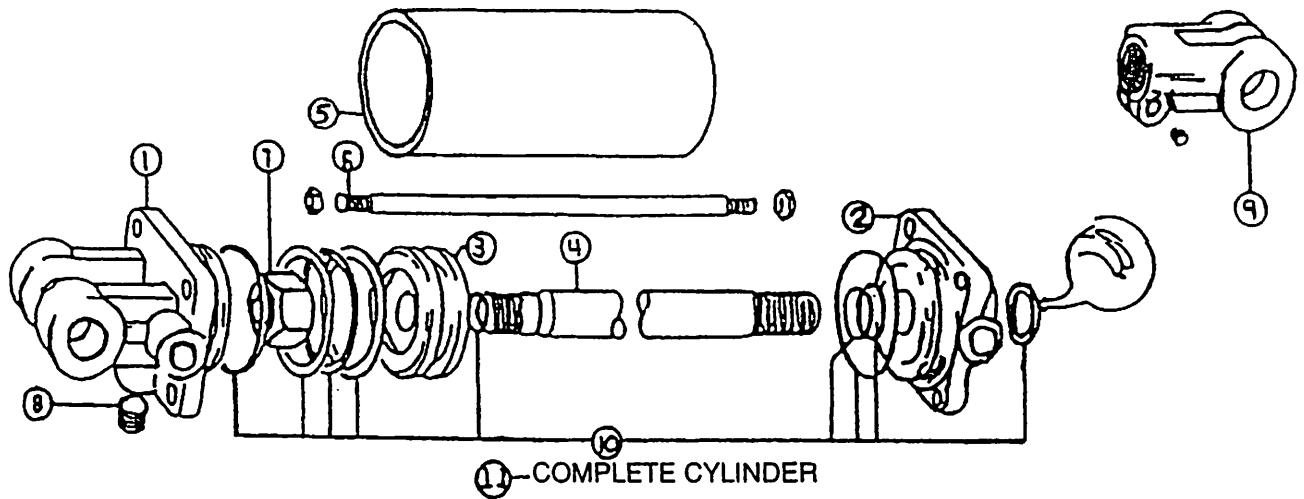
ITEM	PART NO.	DESCRIPTION
1.	WM108	Merger Power Supply Cord W/Ends
2.	16SV271	Control Box Power Supply W/Plug in Slots
3.	16SV270	Tractor Power Supply W/Pins
4.	16SV316	Control Box
5.	16SV317	Control Box Gasket
6.	16SV318	Control Box Cover
7.	16SV235	Switch Boot
8.	WM109	Pole / Pickup Switch
9.	16SV231	Fuse Folder
10.	16SV232	Fuse
11.	16SV269	Tractor Control Cord
*	WM110	Control Box Complete

**NOTE:** \* Means Not Shown



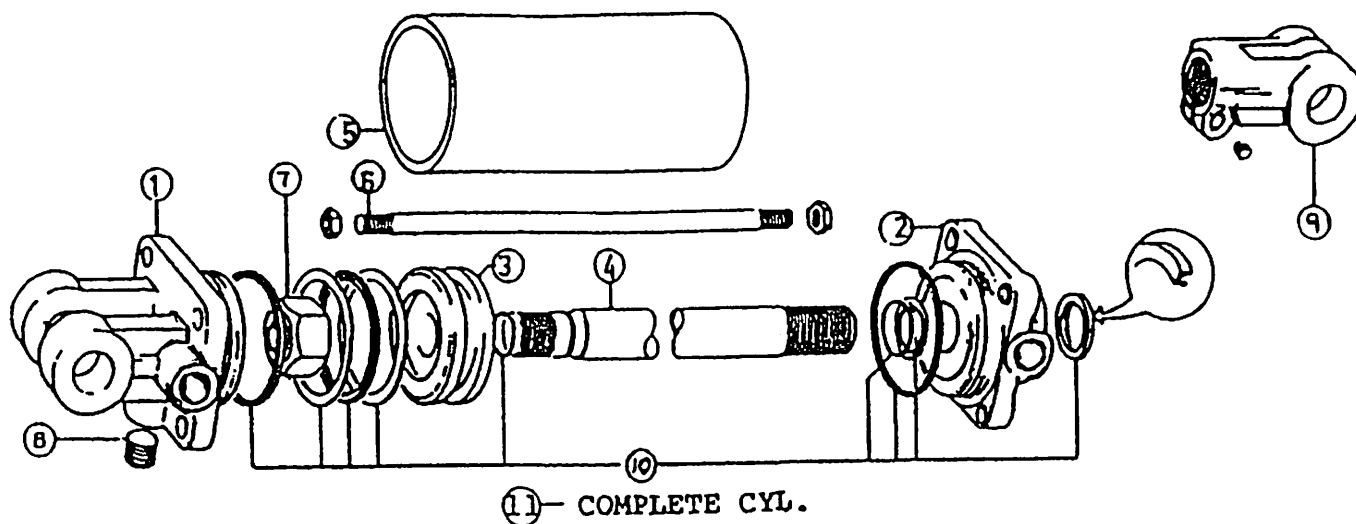
**FIGURE 11**  
**9' & 12' MERGER**  
**PICKUP - HYDRAULIC CYLINDER 8"**

ITEM	PART NO.	DESCRIPTION
1.	23N142A	Clevis
2.	23N143A	Rod Cap
3.	23N144	Piston
4.	T184A	Rod
5.	BFR68	Cylinder Tube
6.	T186	Tie Rod
7.	23N148	Piston Nut
8.	23N149	Plug
9.	23N150A	Rod Clevis
10.	23N151	Seal Kit
11.	BFR69A	Complete Cylinder



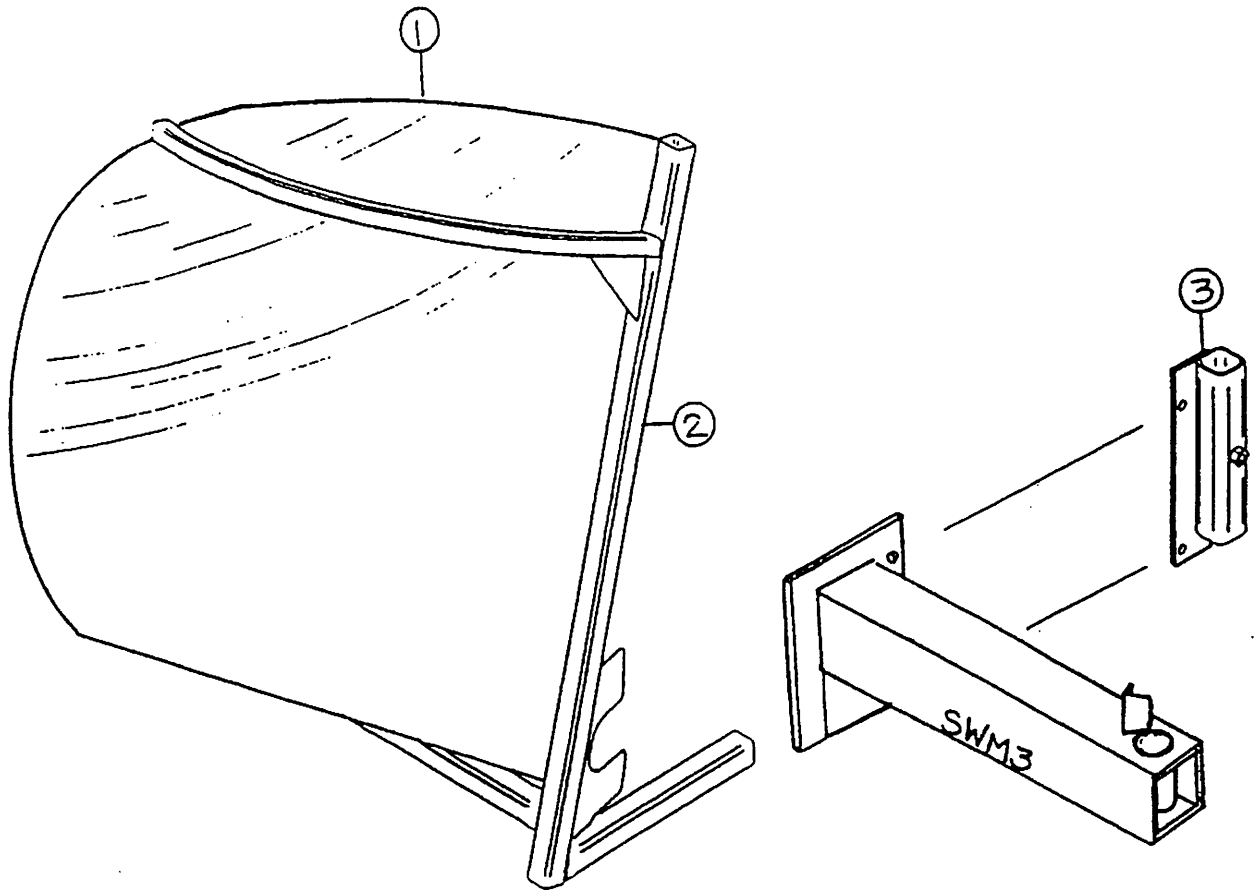
**FIGURE 12**  
**9' & 12' MERGER**  
**POLE - HYDRAULIC CYLINDER 16"**

ITEM	PART NO.	DESCRIPTION
1.	23N142A	Clevis
2.	23N143A	Rod Cap
3.	23N144	Piston
4.	23N145A	Rod
5.	23N146	Cylinder Tube
6.	23N147	Tie Rod
7.	23N148	Piston Nut
8.	23N149	Plug
9.	23N150A	Rod Clevis
10.	23N151	Seal Kit
11.	12V116A	Complete Cylinder



**FIGURE 13**  
**9' & 12' MERGER**  
**OPTIONAL EXTENSION HYDRAULIC CYLINDER**

ITEM	PART NO.	DESCRIPTION
1.	23N142A	Clevis
2.	23N143A	Rod Cap
3.	23N144	Piston
4.	23N145A	Rod
5.	23N146	Cylinder Tube
6.	23N147	Tie Rod
7.	23N148	Piston Nut
8.	23N149	Plug
9.	23N150A	Rod Clevis
10.	23N151	Seal Kit
11.	23N111A	Hydraulic Cylinder



**FIGURE 14**  
**9' & 12' MERGER**  
**OPTIONAL WINDROW INVERTER**

ITEM	PART NO.	DESCRIPTION
1.	SWM50	Windrow Inverter Poly
2.	SWM51	Windrow Inverter Frame
3.	SWM52	Storage Mount

**(NOTE: Storage Mount Bolts onto SWM3 Caster Mount - See Figure 1)**

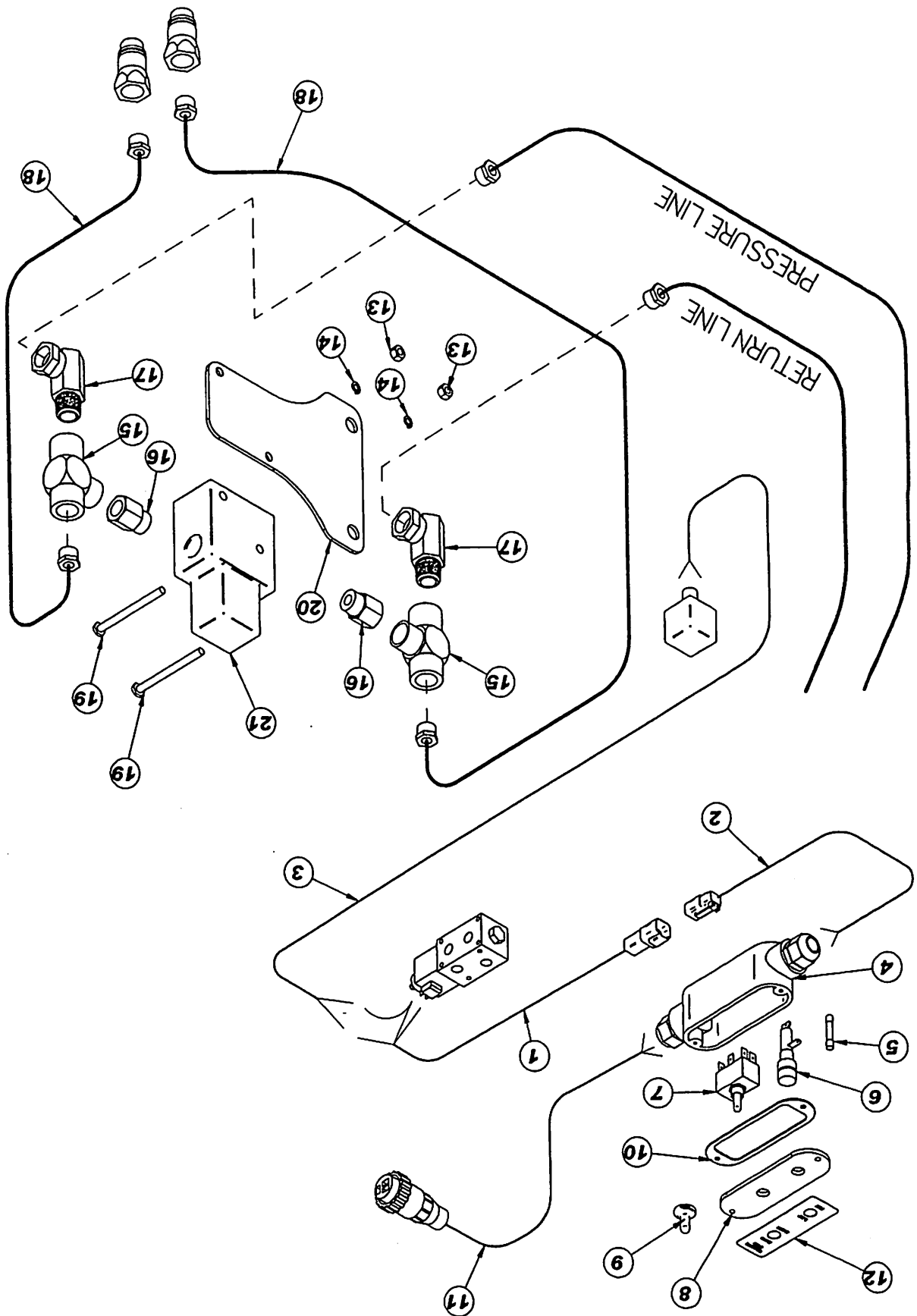


FIGURE 15



**FIGURE 15**  
**9'/12' MERGER**  
**OPTIONAL CROSS CONVEYOR STOP KIT**

<b>ITEM</b>	<b>PART NO.</b>	<b>DESCRIPTION</b>
1.	WM283	Pole Cord (18')
2.	WM284	Tractor Supply Cord (5'6")
3.	WM327	Solenoid Cord (24')
4.	16SV316	Control Box
5.	16SV232	Fuse
6.	16SV231	Fuse Holder
7.	WM290	Switch (SPDT)
8.	16SV318	Control Box Cover
9.	16SV235	Switch Boot
10.	16SV317	Control Box Gasket
11.	16SV271	Control Box Power Supply W/Plug In Slots
12.	42298	Decal
13.	LW140	1/4" - 20 Nut
14.	K84	1/4" Lock Washer
15.	WM139	1/2" Tee 5604-8-8
16.	WM289	7/8" O-Ring To 1/2" NPT Bushing 6405-10-8
17.	WM175	1/2" Swivel 90° Union Adapter
18.	DWM101	1/2" x 49" - 1/2" MPX & 1/2" MP Hose
19.	16SV349	1/4" x 2-1/2" GR. 5 Bolt
20.	WM333	Conveyor Stop Bracket
21.	WM293	Valve (Vickers From Price)

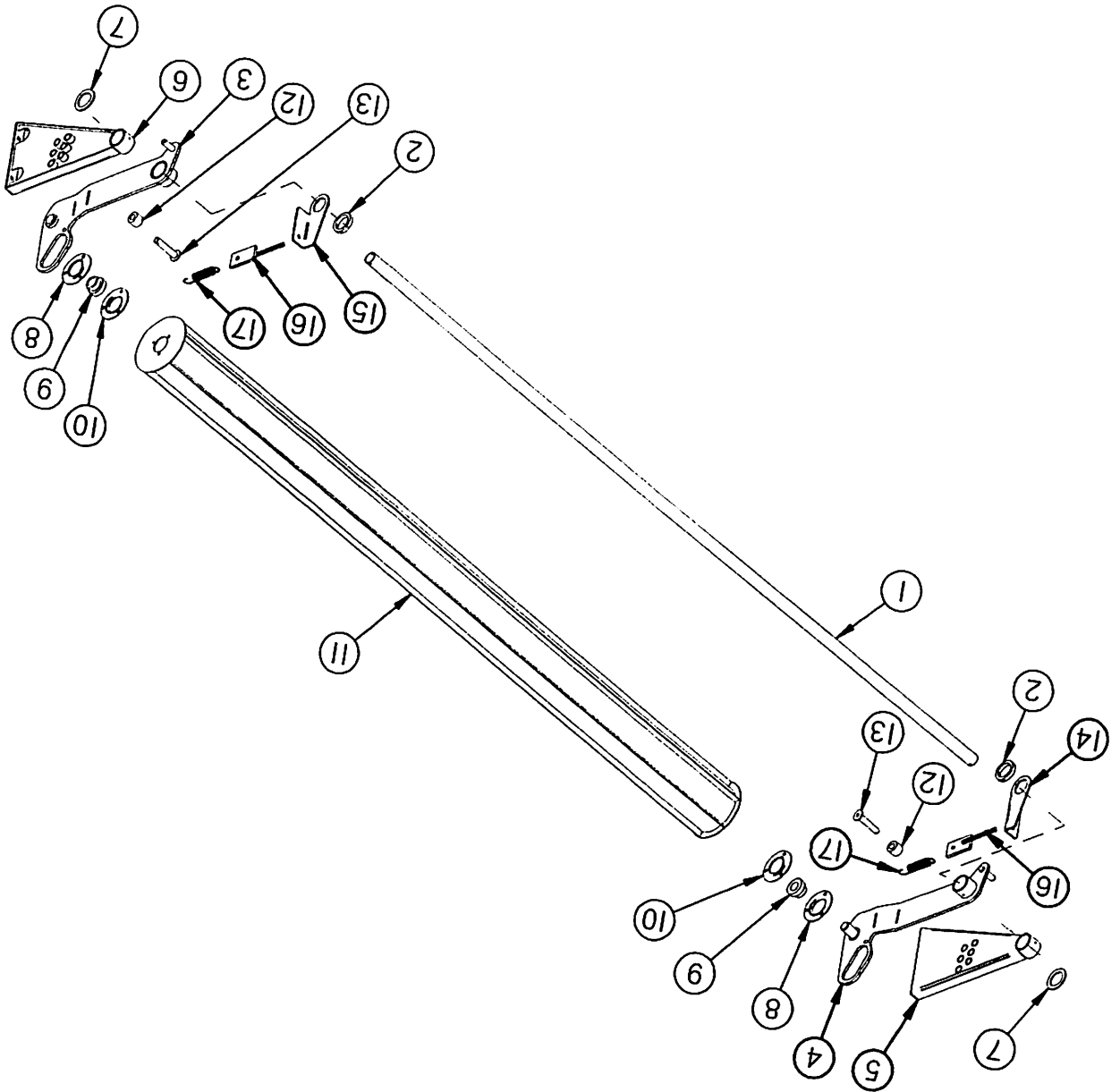
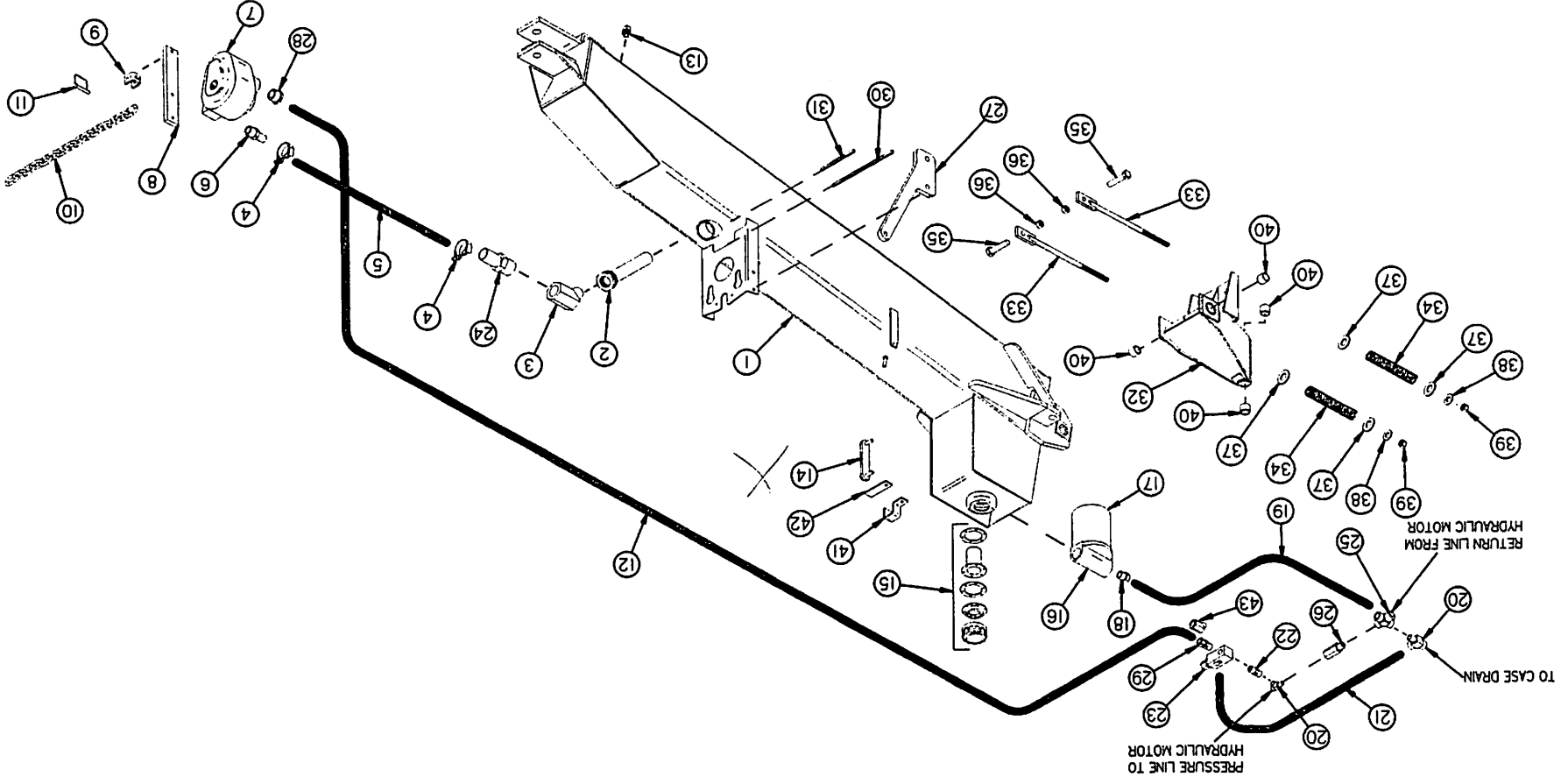


FIGURE 16

**FIGURE 16**  
**9' MERGER**  
**OPTIONAL CROP ROLLER**

<b>ITEM</b>	<b>PART NO.</b>	<b>DESCRIPTION</b>
1.	WM357	Front Support
2.	WM347	Collar
3.	WM348	Left Arm
4.	WM349	Right Arm
5.	WM350	Right Bracket
6.	WM351	Left Bracket
7.	DWM227	Wind Guard Washer
8.	F114A	Bearing Flange (45° Zerk)
9.	F115	1-1/4" Bearing
*	F16	1-1/4" Lock Collar
10.	F14	Bearing Flange
11.	WM356	Crop Roller
12.	WM353	Poly Bumper
13.	WM354	Adjustment Pin
14.	WM362	Spring Tightener Bracket Right
15.	WM363	Spring Tightener Bracket Left
16.	12V78	Tightener Bracket
17.	ST36	Spring

FIGURE 17



**FIGURE 17**  
**9'/12' MERGER**  
**OPTIONAL WET KIT**

<b>ITEM</b>	<b>PART NO.</b>	<b>DESCRIPTION</b>
1.	HSW15	Pole Tank
2.	HSW13	Suction Pipe
3.	DWM242	Street Elbow 45°
4.	DWM138	Hose Clamp
5.	HSW3	Suction Hose 1-1/4" x 46"
6.	HSW9	Hose Barb 1-5/16 - 12 to 1- 1/4 Tube
7.	HSW16	PTO Pump
8.	WM168	Torque Arm
9.	HSW5	Chain Yoke
10.	BFR111	Chain
11.	DWM191	Snapper Pin
12.	HSW6	Hydraulic Hose 3/4 x 122 #12SAE x 1/2 MP
13.	DWM159	Drain Plug
14.	DWM204	Oil Level Gauge
15.	DWM81	Filler Strainer Cap
16.	LW119	Filter Base
17.	LW120	Filter
18.	LW99	Bushing 3/4" to 1/2"
19.	16SV143	Hydraulic Hose 1/2 x 19" 1/2MP - 1/2MPX
20.	LW96	Service Tee 1/2"
21.	S395	Hydraulic Hose 1/2 x 10.5" 1/2MP - 1/2" 90°MPX
22.	WM141	Nipple 1/2"
23.	HSW7	Relief Valve
24.	DWM143	Hose Barb
25.	JB83	1/2" Cross
26.	DF18	1/2" Check Valve
27.	HSW8	Pump Holder
28.	HSW10	Port Bushing 1-5/16 - 12 to 1-1/16 - 12
29.	LW174	1/2" Union Adapter
30.	HSW11	Hole Edging
31.	HSW12	Slot Edging
32.	HSW14	Spring Assist Pivot
33.	RG10	Spring Adjust Rod
34.	T148	Spring
35.	RG15	5/8" x 1-3/4" Bolt
36.	T60	5/8" Toplock Nut
37.	RG9	Spring Retainer
38.	RG8	5/8" Flat Washer
39.	RG7	5/8" Nylon Locknut
40.	RG11	1" ID x 1-1/4" OD x 2" Bushing
41.	HE15	Hose Clamp
42.	HSW17	Hose Clamp Base
43.	LW187	Street Elbow 45°

- SERVICE NOTES -

613-774-6437

## H&S HYDRA-SWING WINDROW MERGER

Your new H&S Windrow Merger has been manufactured of the finest quality materials and components. The performance you get from your machine is largely dependent upon how well you read and understand this manual and apply this knowledge. There is a right and a wrong way to do everything. Please do not assume that you know how to operate and maintain your Windrow Merger before reading this manual carefully. Keep this manual available for ready reference.

### HYDRA-SWING WINDROW MERGER SPECIFICATIONS

Base Unit Width . . . . .	14'4"
Base Unit Width w/2' Extension Extended . . . . .	16'4"
Base Unit Width w/4' Extension Extended . . . . .	18'4"
Base Unit Width w/6' Extension Extended . . . . .	20'4"
Base Unit Width w/Extensions Folded . . . . .	14'10"
Base Unit Height . . . . .	4'6"
Base Unit Length - Pole Swung In . . . . .	22'
Base Unit Length - Pole Swung Out . . . . .	21'
Base Unit Weight . . . . .	3095 Lbs.
Tire Size (Frame) . . . . .	(1) 6.70 X 15 & (2) 9.5L X 15
Tire Size (Pickup) . . . . .	5.70X8
Pickup Width . . . . .	9'
Replaceable Three Prong Plastic Teeth . . . . .	YES
Replaceable Steel Teeth . . . . .	N/A
Cross Conveyor Width . . . . .	42"
Tractor Size and Hydraulic Capacity Needed . . . . .	MIN. - 70 H.P.
	w/16 G.P.M./2000 P.S.I.
Hydraulic Remotes Needed . . . . .	2 Sets

SPECIFICATIONS SUBJECT TO CHANGE WITHOUT NOTICE

## H&S MANUFACTURING CO. INC.

2608 S. Hume Ave.  
P.O. Box 768 - Telephone (715) 387-3414  
FAX (715) 384-5463  
MARSHFIELD, WI 54449



H&S WAREHOUSE Rt. #5 and 76  
P.O. Box 1260 - Telephone (716) 736-7595  
FAX (716) 736-7596  
RIPLEY, NY 14775



**SEAL OF QUALITY**

**FEMA**

for the

products approved

**H&S MFG. CO.**